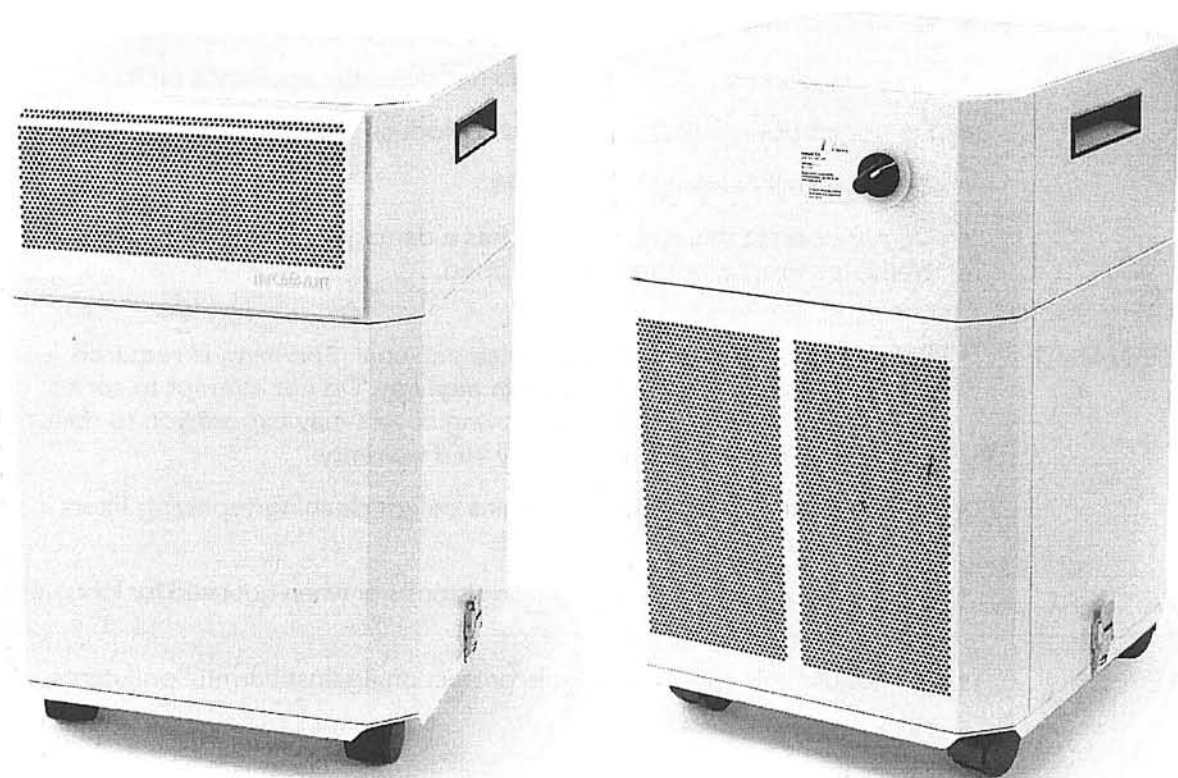


# InovaAir<sup>®</sup> E20

## USERS' MANUAL



**SALES & SERVICE**

**MITE-Y-FRESH**

Ph: (02)9986 3432

[www.miteyfresh.com.au](http://www.miteyfresh.com.au)

**INOVA AIR<sup>®</sup>**

# Important Safety Instructions

- Read these instructions before operating the appliance.
- Keep these instructions for future reference.
- Do not attempt to assemble/disassemble unit without assistance.

---

## OPERATION

- **Do not detach the top of the unit until the unit has been switched off for minimum two (2) minutes to allow motor to become stationary.**
- Use caution when moving the apparatus to avoid injury from tip-over.
- Do not operate unless all components are fully assembled and securely latched.
- Leave a distance of 30cm between the appliance and the nearest wall to allow for adequate air circulation.
- Only use this system fully assembled in an upright position.
- Do not use near water or moisture.
- To avoid damage to the switch, do not place the appliance on its side.
- Do not let objects or liquid enter the product.
- Do not install near any heat sources.
- Do not operate this appliance if it has a damaged cord or plug, is not working correctly, or has been dropped.

---

## MAINTENANCE

- Refer all servicing to qualified service personal. **Servicing is required when the product has been damaged in any way.** Do not attempt to service this product yourself. Opening or removing covers may expose you to dangerous voltages or other hazards, and may void warranty.
- Switch off and disconnect from mains before cleaning/replacing filters in your InovaAir® system.
- Unplug the apparatus during lightning storms or when not used for long periods.

---

## USAGE

- Do not use this appliance as sole protection against harmful pollutants.
- Do not use outdoors.
- Clean only with a dry cloth.
- Do not immerse the InovaAir® in water or any other liquid.
- Do not use in explosive or flammable environments.
- Keep intake and outlet of the unit unobstructed at all times.
- Use only on solid, stable surfaces.
- Keep power cord away from heated surfaces.

**MITEY FRESH**  
PO Box 431  
Terrey Hills NSW 2084  
Australia

# Contents

IMPORTANT SAFETY INSTRUCTIONS	2
SETTING UP YOUR INOVAIR® SYSTEM	4
ASSEMBLING THE INOVAIR®	5
POSITIONING YOUR INOVAIR® SYSTEM	6
HOW YOUR INOVAIR® SYSTEM WORKS	6
REPLACING FILTERS & RECOMMENDED FILTER REPLACEMENT INTERVALS	7
LIMITED THREE-YEAR WARRANTY	8

HOUSTON TEXAS  
10000 HOUSTON  
4805 VICTORIA  
HOUSTON TEXAS

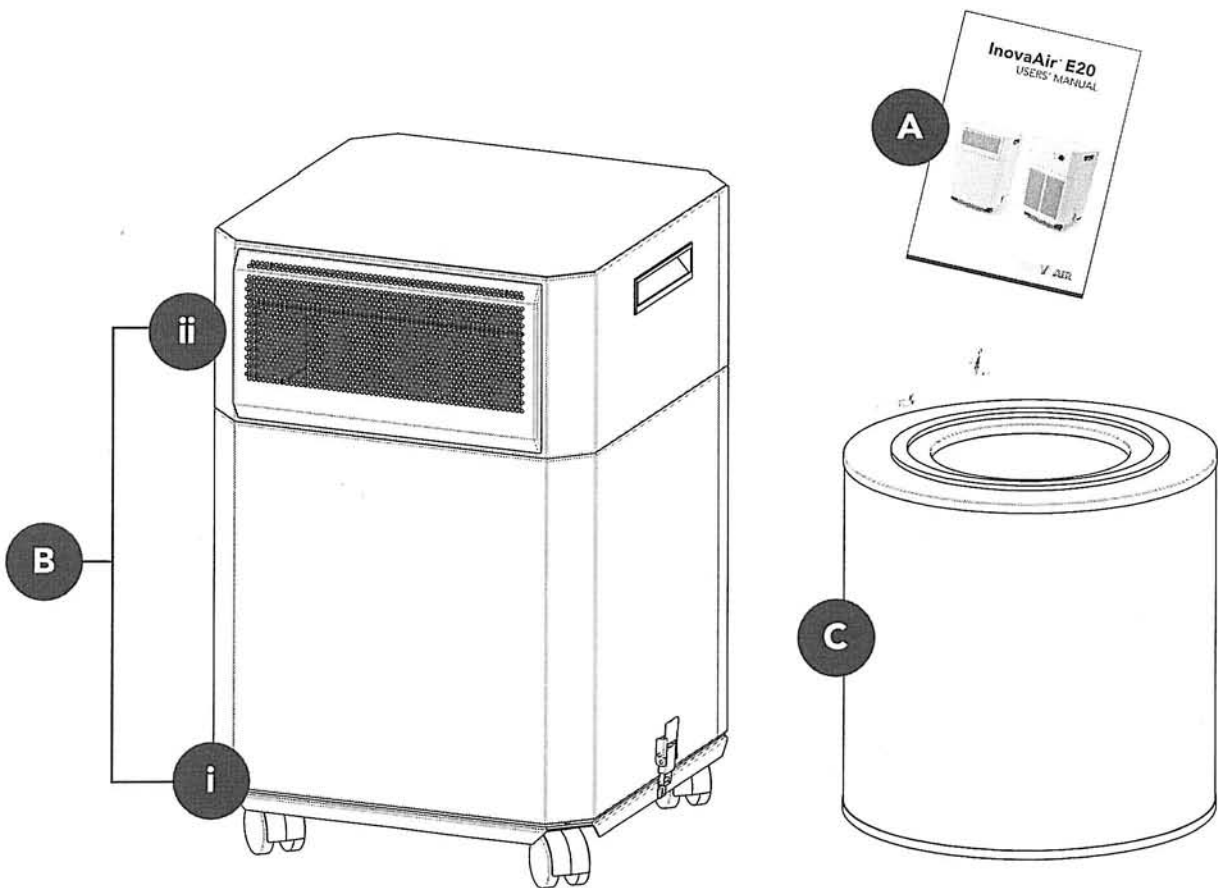
**MITEY FRESH**  
PO Box 431  
Terrey Hills NSW 2084  
Australia

# Setting up your InovaAir® system

## UNPACKING

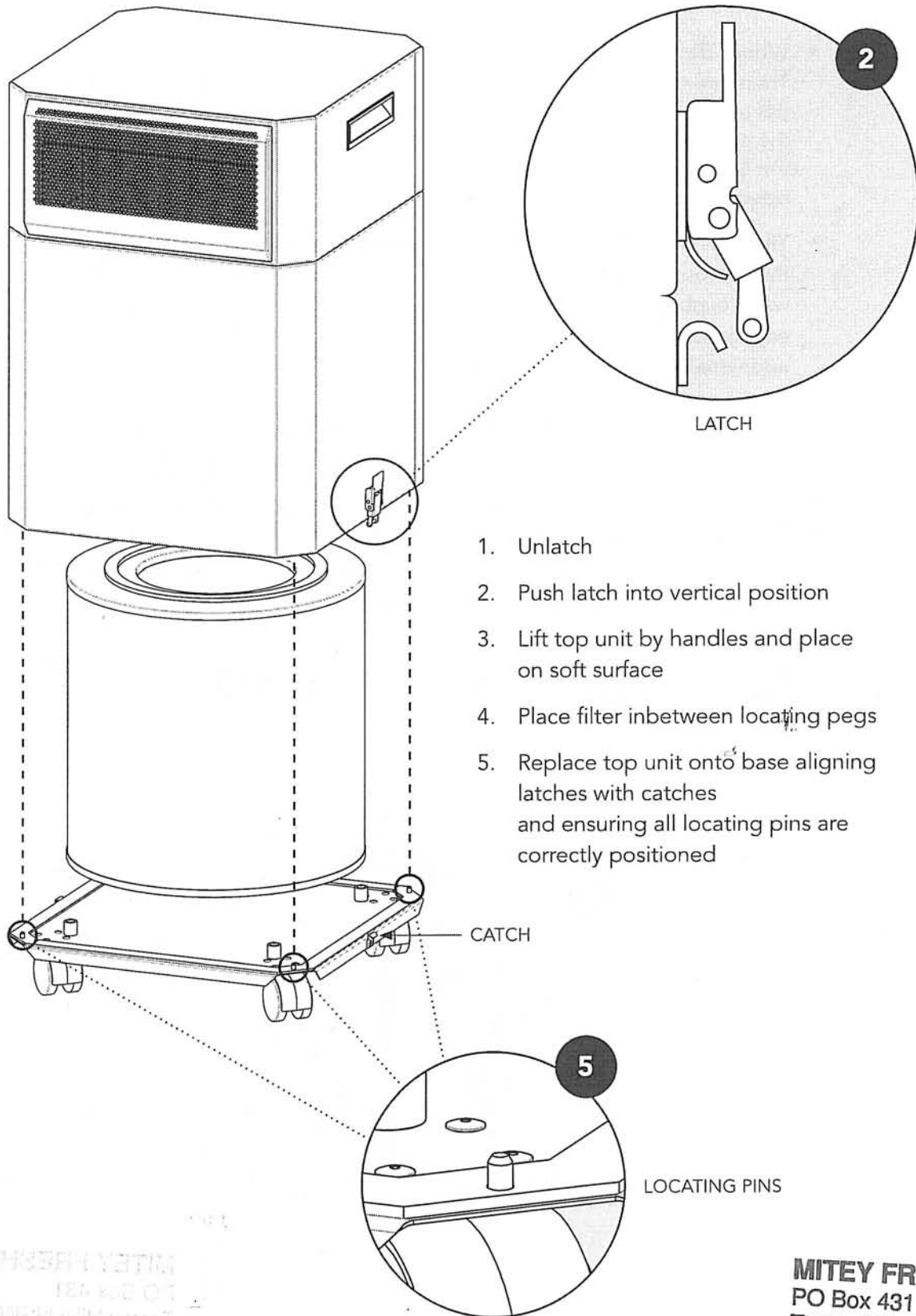
Inside the boxes you will find:

- A. This manual;
- B. The InovaAir® unit, consisting of:
  - i. Unit base;
  - ii. Unit body including power cable
- C. HEPA 99.97% @ .03 micron medical-grade filter / carbon filter.



**MITEY FRESH**  
PO Box 431  
Terrey Hills NSW 2084  
Australia

# Assembling the InovaAir®



MITEY FRESH  
PO Box 431  
Terrey Hills NSW 2084 5  
Australia

# Positioning your InovaAir® system

## CHOOSING A SUITABLE LOCATION

When you're deciding where to place your InovaAir® purifier, there are a few things you should keep in mind:

- **Where do you want clean air?**

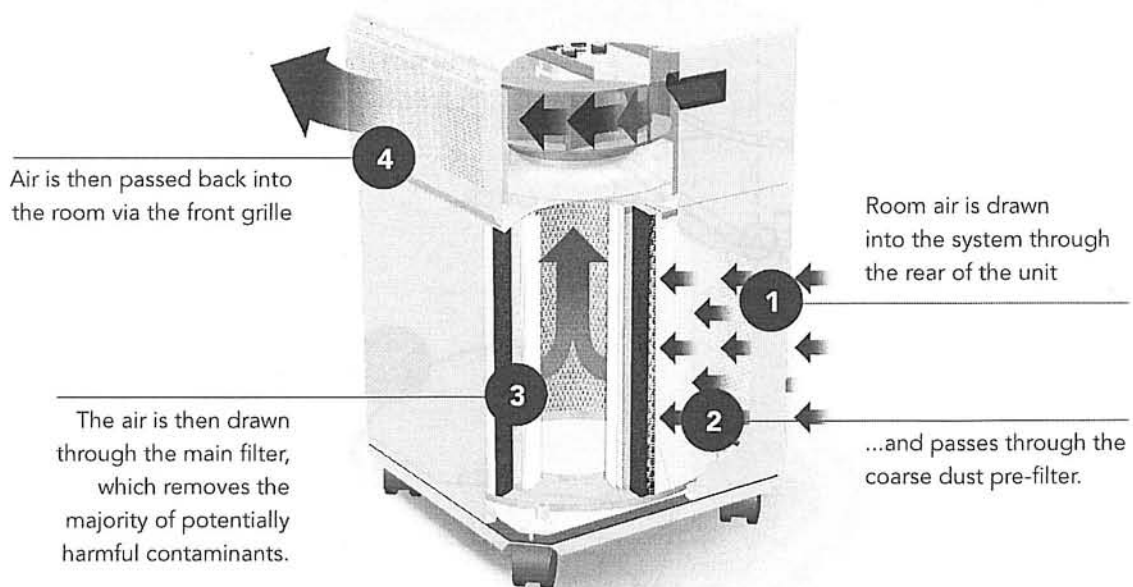
There are two main points to consider: where you spend your time and where the main pollutants are. The longer you keep your InovaAir® in a single room, the cleaner the air in that room will be. Like with a heater or air conditioner the InovaAir® purifier will only be effective if windows are closed during operation.

- **The InovaAir® works best when it has plenty of airflow around it** and for this reason, it's best to locate your unit at least 30cm away from any nearby walls, cupboards or partitions. At the same time, make sure the InovaAir® has easy access to a power outlet; long cords can be a tripping hazard, and may additionally result in damage to the unit should it be knocked over.

## PUTTING YOUR INOVAIR® PURIFIER TO WORK

Once the unit is completely assembled with **ALL FILTERS IN PLACE AND ALL LATCHES SECURED**, plug it in and switch it on. There are 3 speed settings. Speed 1 is the quietest, lowest setting and generally used while sleeping at night or in small areas. Speeds 2 and 3 offer higher performance for larger areas and faster airborne contaminant removal.

## How your InovaAir® works



**MITEY FRESH**  
PO Box 431  
Terrey Hills NSW 2084  
Australia

# Replacing Filters

## LOCATION OF THE FILTER ELEMENTS

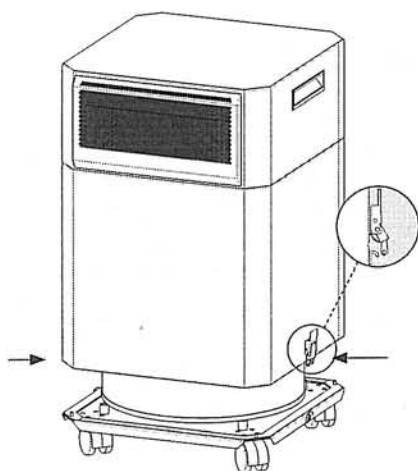
Average filter lifespans are shown below; however, if you notice a reduction in filter efficacy or a pungent smell emitting from your InovaAir®, filter replacement may be necessary. Your InovaAir® system features quick filter access design which makes changing your filters easy.



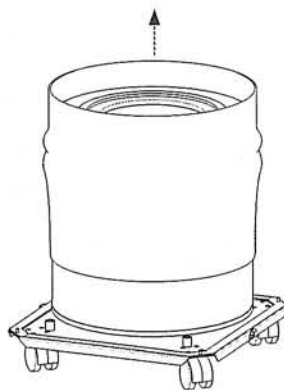
**WHEN REPLACING THE FILTERS, SWITCH OFF AND COMPLETELY UNPLUG YOUR SYSTEM BEFORE UNLATCHING AND REMOVING THE MOTOR-OUTLET MODULE.**

Do not detach the top of the unit until the unit has been switched off for minimum two (2) minutes to allow motor to become stationary.

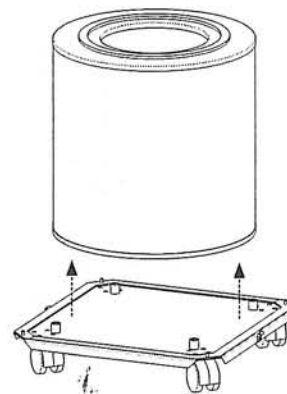
Once this has been done, the main filter can be safely and easily lifted out for replacement.



1. Release the latch on both sides of the unit and lift top section from base



2. The pre-filter can now be removed or vacuumed



3. To change the main filter, remove the pre-filter and lift it from the base

## Recommended Filter Replacement Intervals

ITEM NAME	APPROXIMATE REPLACEMENT INTERVAL*
(Wrap-around) Pre-Filter	Replace: 12 months / Vacuum: 3 months
HEPA 99.7% > 0.3µm – 7kg carbon filter	3 years

**PLEASE NOTE:** Filter replacement intervals are based on average contaminant levels and will vary depending on usage. If there is noticeably restricted airflow or your carbon filter is emitting an unpleasant odour or chemical smell, this indicates that filters likely require replacement.

**MITEY FRESH**  
PO Box 431  
Terrey Hills NSW 2084  
Australia

# Warranty for InovaAir

## DEFINITIONS

In this warranty:

"Act" means the Commonwealth Trade Practices Act 1974 as amended.

"Back to Base" means where delivery to and collection of your product from the Service Agent is your responsibility.

"Consumable" includes (without limitation) filters and pre-filters.

"InovaAir<sup>®</sup> Australia" means InovaAir<sup>®</sup> Australia Pty Ltd ACN 103 549 435.

"Factory Second" means a Product sold by InovaAir<sup>®</sup> Australia or any other authorised person as a second.

"Genuine" means manufactured by or on behalf of InovaAir<sup>®</sup> Australia.

"Product" means a Genuine Product supplied new by InovaAir<sup>®</sup> Australia.

"Purchase Date" means the date of first purchase from InovaAir<sup>®</sup> Australia or any other authorized person seller or distributor.

"Any other authorized person" means a dealer, reseller or retailer of the Product.

"Service Agent" means an authorized InovaAir<sup>®</sup> Australia service agent.

"You" means the End User and "your" has a corresponding meaning.

## INTRODUCTION

Subject to these conditions, EnvironAir<sup>®</sup> Australia offers this Warranty on a Product to which it's Back to Base service applies.

- (1) This Warranty applies in addition to the conditions and warranties implied by the Act in relation to a Product.
- (2) Any other authorized person who has sold a Product to you has acted as principal and has no authority to give any additional warranty or guarantee in relation to the Product on behalf of InovaAir<sup>®</sup> Australia.
- (3) InovaAir<sup>®</sup> Australia will not be liable for any consequential loss, indirect or special damage arising from your use of the Product. In particular (but without limitation) InovaAir<sup>®</sup> Australia excludes any liability for actual or expected revenue loss or other loss.  
NB. This exclusion is subject to any relevant Commonwealth or state law, which is intended to override such exclusions.
- (4) In no event shall InovaAir<sup>®</sup> Australia, its agents, employees, or distributors be liable for special, incidental, consequential, or indirect damages.
- (5) The provisions of this warranty supersede and are in lieu of any other warranty, whether express or implied, written or oral, including any warranty of merchantability or fitness for a particular purpose.  
NB. This exclusion is subject to any relevant Commonwealth or state law, which is intended to override such exclusions.
- (6) Maximum liability shall not exceed the actual purchase price paid for this product.
- (7) This warranty is non-transferable.
- (8) Should any of the conditions of the warranty be deemed unenforceable then same shall be severable from the balance of warranty conditions, which shall remain legally binding.

## WARRANTY

InovaAir<sup>®</sup> Australia warrants that your Product will be free from defects in materials or workmanship for three (3) year (and in the case of a Factory Second for six (6) months) from your Purchase Date.

At its discretion, InovaAir<sup>®</sup> Australia will repair or replace your Product, if it does not comply with this Warranty. InovaAir<sup>®</sup> Australia will, if it deems the unit defective, either repair or replace the unit at its sole option (and, based on availability, may elect to replace the unit with an air purifier or similar function or value).

To make a Warranty claim, you must:

- First call InovaAir<sup>®</sup> Australia's Contact Centre on 1 300 137 244;
- Return the Product (if warranty service is required) in its original packaging (or suitable alternative) to a Service Agent, as discussed with the Contact Centre; and
- Provide a copy of your purchase receipt, to show that this Warranty applies to your Product at the date of your claim.

You are responsible for the delivery of your Product to and its collection from the Service Agent.

## WARRANTY APPLICATION

This Warranty applies only:

- a. To a Product that is supplied new to You by InovaAir<sup>®</sup> Australia or by any other authorized person;
- b. If you use the Product for your own private or business purposes; and
- c. You have not bought the Product for resale.

## WARRANTY EXCLUSIONS

This Warranty will not apply if during the warranty period:

- a. A Product's serial number or any rating label is removed or changed in any way; The warranty shall immediately become void if the unit's serial number label is removed, altered, or is no longer clearly legible;
- b. A Product is repaired other than by a Service Agent;
- c. You use a Product contrary to any technical or operating environment or safety guidelines recommended in its user guide or manual;
- d. No fault found service calls where the perceived problem is explained within the Operating Manual or the trouble shooting section of the operating manual.
- e. This Warranty does not cover costs associated with delivery, handling, freightage or damage to product in transit.
- f. This Warranty does not apply to a Product's malfunction or failure resulting from:
  - i. Deliberate or accidental damage;
  - ii. Rust or damage to paintwork, varnishes or seals caused by a corrosive atmosphere;
  - iii. Vermin infestation;
  - iv. Any modification by the purchaser which affects the reliability or performance of the unit, not attributable to faulty manufacture, parts and labour;
  - v. Where a unit is installed incorrectly by the purchaser or its servants agents employees or by unqualified persons;
  - vi. Failure is due to improper installation or faulty installation;
  - vii. Failure is due to improper maintenance by customer (refer to maintenance section of Operating Instructions);
  - viii. Misuse, abuse or neglect;
  - ix. Incorrect voltage or a power surge; or
  - x. Your use of any non-genuine Consumables parts accessories or interfacing;
  - xi. Failure to remove or replace out of date or non-functioning filter.
- g. This warranty covers only manufacturing defects, and not normal wear and tear.
- h. InovaAir<sup>®</sup> does not warrant the Product as a health safety device.
- i. All exclusions as determined by InovaAir<sup>®</sup> Australia at its sole discretion.

## NON-GENUINE ITEMS

InovaAir<sup>®</sup> Australia advises that if you use non-Genuine Consumables, replacement parts or accessories, you may damage your Product and may void your warranty.

MITEY FRESH  
PO Box 431  
Terrey Hills NSW 2084  
Australia